



Mahatma Gandhi Missions College  
of Engineering & Technology

# FABRICATION OF DOUBLE CHAIN RICKSHAW

MANMOHAN GAUR, MERAJ AHMED, ABHISHEK MANRAL, NAND KISHORE  
*Department of Mechanical Engineering*



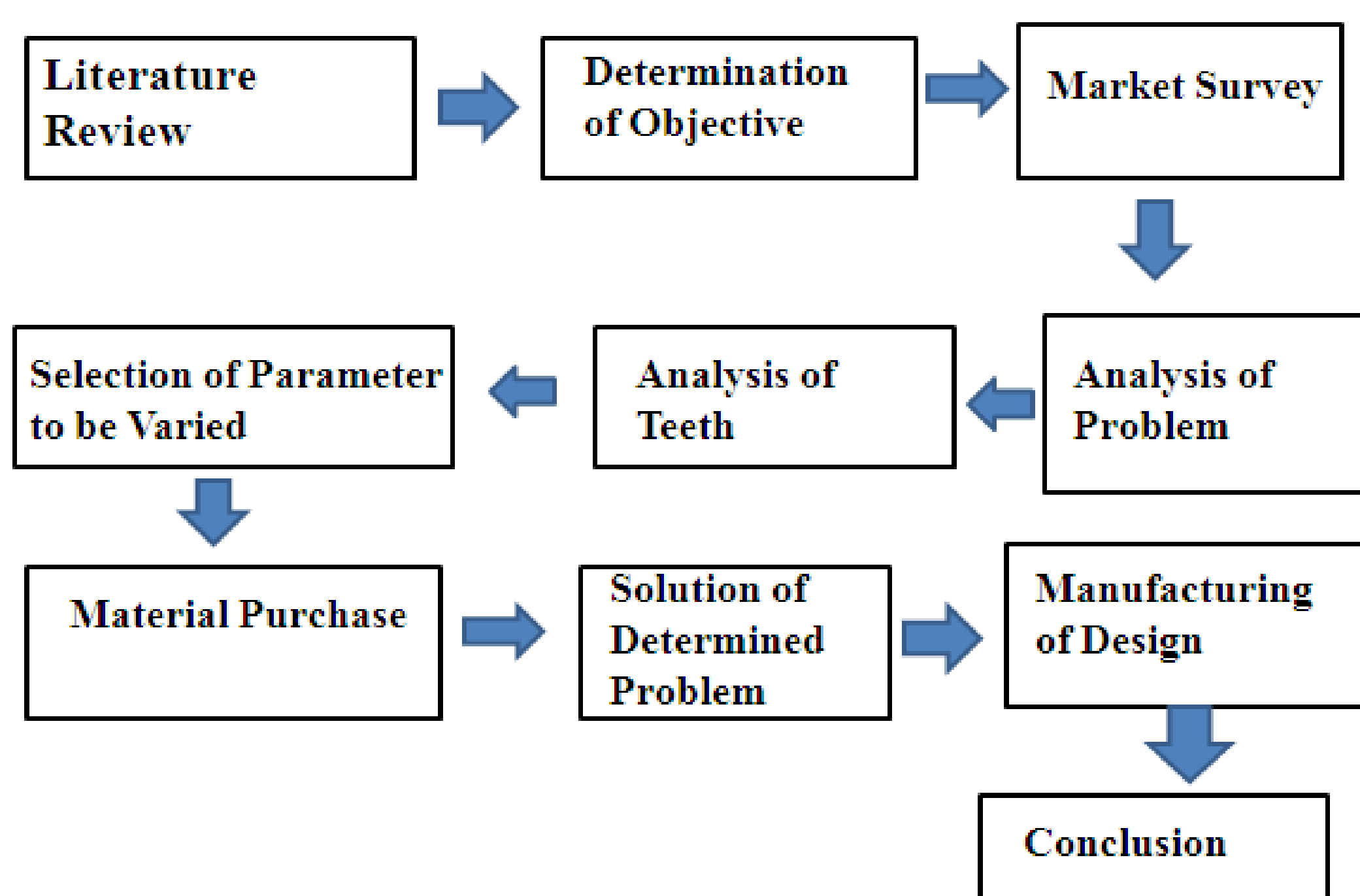
## Introduction

We are introducing double chain at place of single chain. It will help to reduce foot effort. The invention relates to an improved pedal drive mechanism for a bicycle. The paths are defined by two sets of sprockets disposed in parallel planes connected by a set of double strand chains.

## Project Objectives

1. To reduce driver efforts.
2. To develop more power and speed with less efforts.
3. To develop for passenger comfort.
4. To reduce jerks.

## Methodology



## Results and Discussion

➤ According to rickshaw puller there is an increase in comfort of rickshaw pullers as they have to apply less effort as compared to previous one, also this rickshaw have front damper which also reduce front jerks, which also increase comfort level for rickshaw puller.

➤ There is an increase in comfort level of rickshaw puller but there is no change in comfort of passenger.

➤ In testing we concluded that there is no much difference in speed of rickshaw. Some rickshaw pullers said that there is no such increase in speed.



## Images



## Conclusions

- There is an increase in comfort of rickshaw pullers.
- There is no much difference in speed of rickshaw
- Rickshaw pullers conforms reduction in effort.

## References

- The Jinrikisha story, The East, November-December 1996. History of the rickshaw in Japan.
- AK Kom, "Rickshaw Pullers of Manipur", Manipur online, Tuesday, November 05, 2002.

*Guided by:*  
**Mr. UMESH YADAV**  
*(Assistant Professor)*